

1.27mm x1.27mm(.050" x.050") BOX HEADER WITH EJECTOR RIGHE ANGLE TYPE

MATERIAL

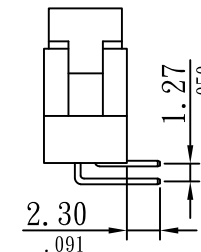
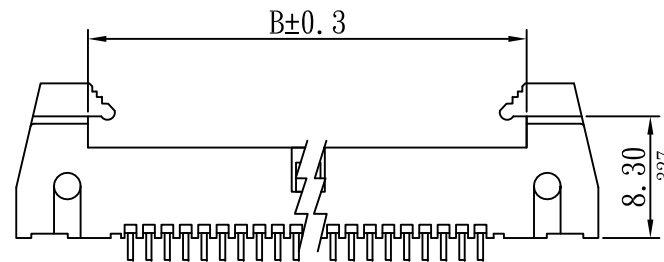
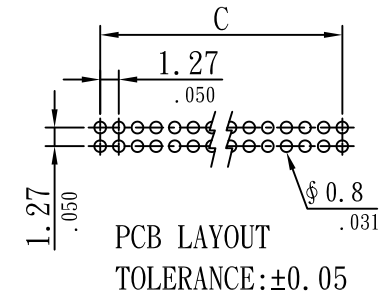
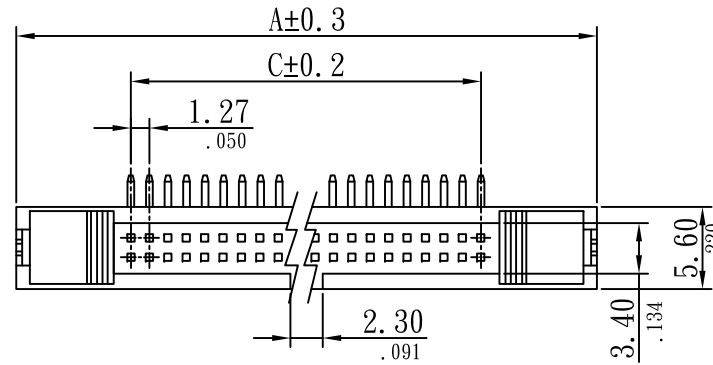
Insulator: LCP UL 94V-0
 Color: Black
 Contact: Brass 0.40mm(.016") square Pins
 Plating: Gold plated

SPECIFICATIONS

Temperature range: -55°C ~ +105°C
 Current rating: 1.0A Max.
 Dielectric withstand voltage: 600V AC
 Insulation resistance: 1000 MΩ Min.

R 6700-xxx G R-S
 1 2 3 4 5 6

1. RoHS
2. Series No.
3. Pin No.
4. Gold flash
5. Right angle
6. Short lever



Dimensional Information

Circuits	Dim. A	Dim. B	Dim. C	Circuits	Dim. A	Dim. B	Dim. C
6	18.31(0.721)	8.46(0.333)	2.54(0.100)	34	36.09(1.421)	26.24(1.033)	20.32(0.800)
10	20.85(0.821)	11.00(0.433)	5.08(0.200)	40	39.90(1.571)	30.05(1.183)	24.13(0.950)
12	22.12(0.871)	12.27(0.483)	6.35(0.250)	44	42.44(1.671)	32.59(1.283)	26.67(1.050)
14	23.39(0.921)	13.54(0.533)	7.62(0.300)	50	46.25(1.821)	36.40(1.433)	30.48(1.200)
16	24.66(0.971)	14.81(0.583)	8.89(0.350)	60	52.60(2.071)	42.75(1.683)	36.83(1.450)
20	27.20(1.071)	17.35(0.683)	11.43(0.450)	64	55.14(2.171)	45.29(1.783)	39.37(1.550)
26	31.01(1.221)	21.16(0.833)	15.24(0.600)	66	56.41(2.221)	46.56(1.833)	40.64(1.600)
30	33.55(1.321)	23.70(0.933)	17.78(0.700)	68	57.68(2.271)	47.83(1.833)	41.91(1.650)



Sunny Young Enterprise Co., Ltd.

S. Y. E. <http://www.sunnyyoung.com.tw>

13F., No. 116, Sec. 1, Xintai 5th Rd., Xizhi Dist., New Taipei City 221, Taiwan

Tel: +886 2 2696 1668(REP) Fax: +886 2 2696 2668

PART NO

R6700-xxxGR-S

M065	NAME	DATE	SCALE: 1:3	REV NO	DATE	DESCRIPTION	BY	CHECKED	TOLERANCE UNLESS NOTED	
DRAWN	DEAN	2017.06.26	UNIT: mm(in.)	A					LINEAR±	.0 ±0.30(.012)
CHECKED	SEAN	2017.06.26	CAD NO	B				.00 ±0.20(.008)		
APPROVED	ALBERT	2017.06.27	R6700-xxxGR-S	C				.000±0.10(.004)		
									PROJECTION:	

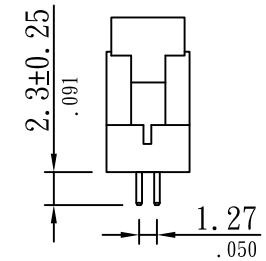
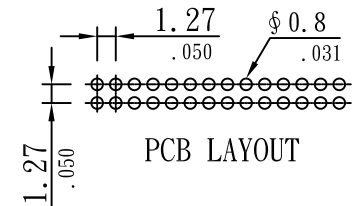
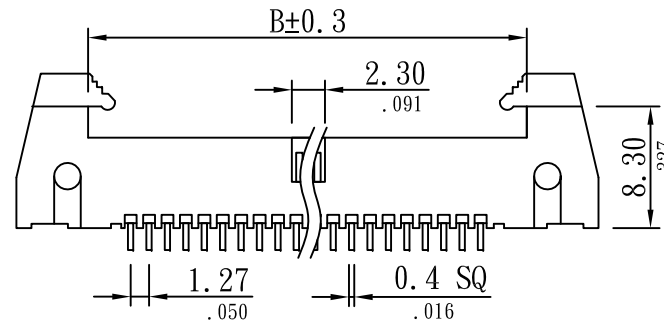
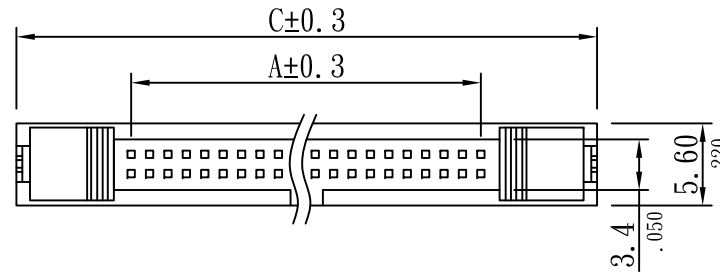
1. 27mm x1.27mm(.050" x.050") DUAL ROW HEADER WITH LATCH EJECT

MATERIAL

Insulator: LCP.
Color: Black
Contact: Brass
Plating: Gold flash

R 6700-xxx G S-S
1 2 3 4 5 6

1. RoHS
2. Series No.
3. Pin No.
4. Gold flash
5. Straight angle
6. Short lever



Dimensional Information

Circuits	Dim. A	Dim. B	Dim. C	Circuits	Dim. A	Dim. B	Dim. C
6	2.54(0.100)	8.46(0.333)	18.31(0.721)	34	20.32(0.800)	26.24(1.033)	36.09(1.421)
10	5.08(0.200)	11.00(0.433)	20.85(0.821)	40	24.13(0.950)	30.05(1.183)	39.90(1.571)
12	6.35(0.250)	12.27(0.483)	22.12(0.871)	44	26.67(1.050)	32.59(1.283)	42.44(1.671)
14	7.62(0.300)	13.54(0.533)	23.39(0.921)	50	30.48(1.200)	36.40(1.433)	46.25(1.821)
16	8.89(0.350)	14.81(0.583)	24.66(0.971)	60	36.83(1.450)	42.75(1.683)	52.60(2.071)
20	11.43(0.450)	17.35(0.683)	27.20(1.071)	64	39.37(1.550)	45.29(1.783)	55.14(2.171)
26	15.24(0.600)	21.16(0.833)	31.01(1.221)	66	40.64(1.600)	46.56(1.833)	56.41(2.221)
30	17.78(0.700)	23.70(0.933)	33.55(1.321)	68	41.91(1.650)	47.83(1.833)	57.68(2.271)



Sunny Young Enterprise Co., Ltd.

S. Y. E. <http://www.sunnyyoung.com.tw>

13F., No. 116, Sec. 1, Xintai 5th Rd., Xizhi Dist., New Taipei City 221, Taiwan

Tel: +886 2 2696 1668(REP) Fax: +886 2 2696 2668

PART NO

R6700-xxxGS-S

M127	NAME	DATE	SCALE: NTS	REV NO	DATE	DESCRIPTION	BY	CHECKED	TOLERANCE UNLESS NOTED	
DRAWN	YXF	2009.03.23	UNIT: mm(in.)	A					LINEAR±	.0 ±0.30(.012)
CHECKED	PIQI	2009.03.23	CAD NO	B						.00 ±0.20(.008)
APPROVED	PC	2009.03.23	R6700-xxxGS-S	C						.000±0.10(.004)
									PROJECTION:	