

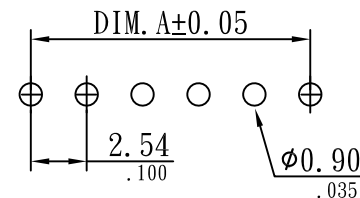
2.54mm(.100") ROUND PIN SIP SOCKET

MATERIAL

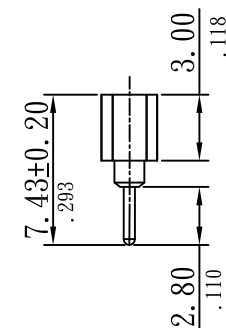
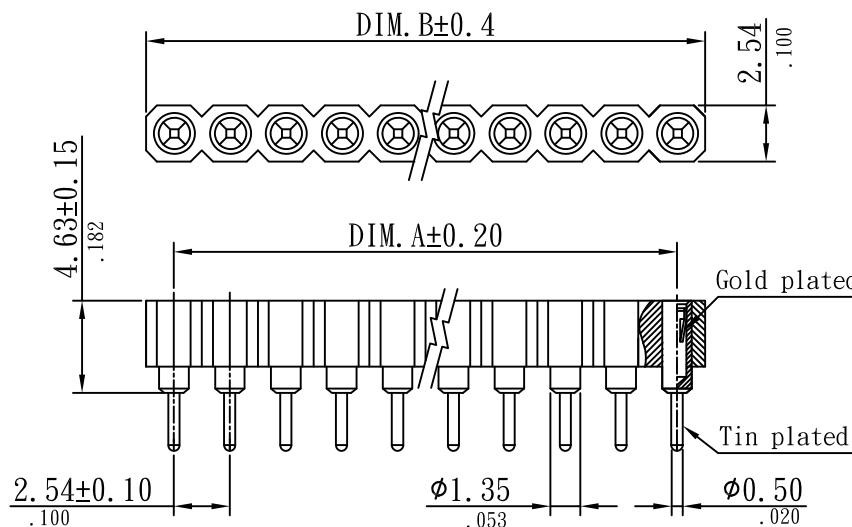
Insulator: PPS UL 94V-0
 Color: Black
 Contact: Copper alloy
 Plating: Selective gold plating

SPECIFICATIONS

Temperature range: -40°C ~ +105°C
 Current rating: 3.0A
 Voltage rating: 60V AC
 Insulation resistance: 1000 MΩ Min.
 Contact resistance: 0.04 Ω Max.



PCB LAYOUT



Order Information

R 3312-xxP

1 2 3

1. RoHS
2. Series No.
3. Pin No.

Dimensional Information

Circuits	DIM. A		DIM. B		Circuits	DIM. A		DIM. B		Circuits	DIM. A		DIM. B	
	mm	in	mm	in		mm	in	mm	in		mm	in	mm	in
2	2.54	0.100	5.08	0.200	15	35.56	1.400	38.10	1.500	28	68.58	2.700	71.12	2.800
3	5.08	0.200	7.62	0.300	16	38.10	1.500	40.64	1.600	29	71.12	2.800	73.66	2.900
4	7.62	0.300	10.16	0.400	17	40.64	1.600	43.18	1.700	30	73.66	2.900	76.20	3.000
5	10.16	0.400	12.70	0.500	18	43.18	1.700	45.72	1.800	31	76.20	3.000	78.74	3.100
6	12.70	0.500	15.24	0.600	19	45.72	1.800	48.26	1.900	32	78.74	3.100	81.28	3.200
7	15.24	0.600	17.78	0.700	20	48.26	1.900	50.80	2.000	33	81.28	3.200	83.82	3.300
8	17.78	0.700	20.32	0.800	21	50.80	2.000	53.34	2.100	34	83.82	3.300	86.36	3.400
9	20.32	0.800	22.86	0.900	22	53.34	2.100	55.88	2.200	35	86.36	3.400	88.90	3.500
10	22.86	0.900	25.40	1.000	23	55.88	2.200	58.42	2.300	36	88.90	3.500	91.44	3.600
11	25.40	1.000	27.94	1.100	24	58.42	2.300	60.96	2.400	37	91.44	3.600	93.98	3.700
12	27.94	1.100	30.48	1.200	25	60.96	2.400	63.50	2.500	38	93.98	3.700	96.52	3.800
13	30.48	1.200	33.02	1.300	26	63.50	2.500	66.04	2.600	39	96.52	3.800	99.06	3.900
14	33.02	1.300	35.56	1.400	27	66.04	2.600	68.58	2.700	40	99.06	3.900	101.60	4.000

Sunny Young Enterprise Co., Ltd.

S. Y. E. <http://www.sunnyyoung.com.tw>
 13F., No. 116, Sec. 1, Xintai 5th Rd., Xizhi Dist., New Taipei City 221, Taiwan
 Tel: +886 2 2696 1668(REP) Fax: +886 2 2696 2668

M170	NAME	DATE	SCALE: NTS	REV NO	DATE	DESCRIPTION	BY	CHECKED	TOLERANCE UNLESS NOTED	
DRAWN	SEAN	2013.01.11	UNIT: mm(in.)	A					LINEAR±	.0 ±0.30(.012)
CHECKED			CAD NO	B						.00 ±0.20(.008)
APPROVED	TINA	2013.01.11	R3312-xxP	C						.000±0.10(.004)
									PROJECTION:	

PART NO R3312-xxP

2.54mm(.100") ROUND PIN SIP SOCKET

MATERIAL

Insulator: PPS UL 94V-0
 Color: Black
 Pin: Brass, machined CuZn38Pb2
 Plating: Gold plated: 2um/80u" Nickel full gold
 Clip: Beryllium copper, heat treated
 Plating: 2um/80u" nickel, Gold or Tin plated

SPECIFICATIONS

Current rating: 3.0A
 Voltage rating: 60V AC/DC
 Contact resistance: 4MΩ
 Insulation resistance: 10000 MΩ at V=100V

MECHANICAL

Average insertion force with steel pin of $\phi 0.43\text{mm}/0.017"$: <250g
 Average withdrawal force with steel pin of $\phi 0.43\text{mm}/0.017"$: <90g min.
 Mechanical life cycle: 200.min
 Operating Temperature: Gold plated: -55°C ~ +105°C
 Tin plated: -40°C ~ +105°C
 Soldering Temperature: 260°C, 10s max

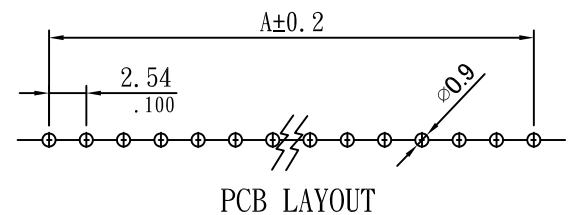
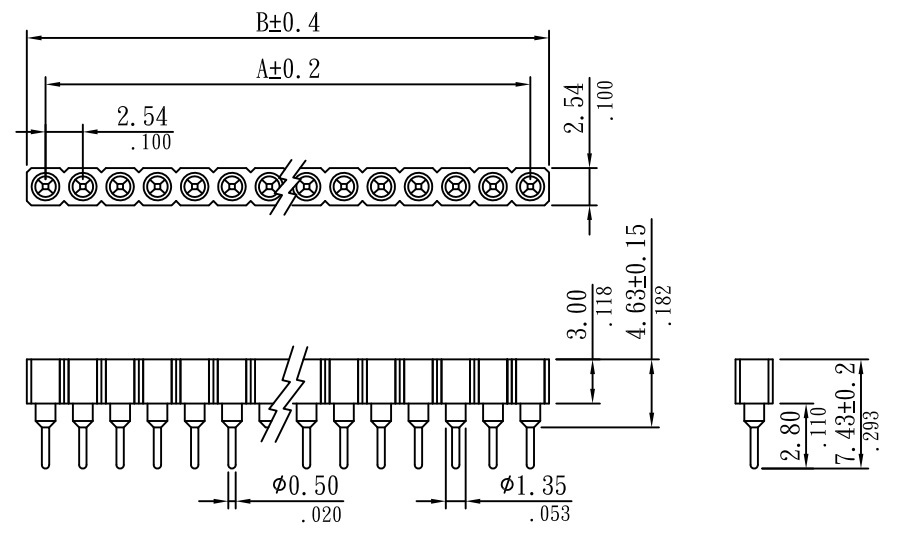
Order Information

R 3312-xx G S
 1 2 3 4 5

1. RoHS
2. Series No.
3. Pin No.
4. Gold plated
5. Straining angle

Dimensional Information

Circuits	Dim. A	Dim. B	Circuits	Dim. A	Dim. B	Circuits	Dim. A	Dim. B	Circuits	Dim. A	Dim. B
1		2.54(0.100)	11	25.40(1.000)	27.94(1.100)	21	50.80(2.000)	53.34(2.100)	31	76.20(3.000)	78.74(3.100)
2	2.54(0.100)	5.08(0.200)	12	27.94(1.100)	30.48(1.200)	22	53.34(2.100)	55.88(2.200)	32	78.74(3.100)	81.28(3.200)
3	5.08(0.200)	7.62(0.300)	13	30.48(1.200)	33.02(1.300)	23	55.88(2.200)	58.42(2.300)	33	81.28(3.200)	83.82(3.300)
4	7.62(0.300)	10.16(0.400)	14	33.02(1.300)	35.56(1.400)	24	58.42(2.300)	60.96(2.400)	34	83.82(3.300)	86.36(3.400)
5	10.16(0.400)	12.70(0.500)	15	35.56(1.400)	38.10(1.500)	25	60.96(2.400)	63.50(2.500)	35	86.36(3.400)	88.90(3.500)
6	12.70(0.500)	15.24(0.600)	16	38.10(1.500)	40.64(1.600)	26	63.50(2.500)	66.04(2.600)	36	88.90(3.500)	91.44(3.600)
7	15.24(0.600)	17.78(0.700)	17	40.64(1.600)	43.18(1.700)	27	66.04(2.600)	68.58(2.700)	37	91.44(3.600)	93.98(3.700)
8	17.78(0.700)	20.32(0.800)	18	43.18(1.700)	45.72(1.800)	28	68.58(2.700)	71.12(2.800)	38	93.98(3.700)	96.52(3.800)
9	20.32(0.800)	22.86(0.900)	19	45.72(1.800)	48.26(1.900)	29	71.12(2.800)	73.66(2.900)	39	96.52(3.800)	99.06(3.900)
10	22.86(0.900)	25.40(1.000)	20	48.26(1.900)	50.80(2.000)	30	73.66(2.900)	76.20(3.000)	40	99.06(3.900)	101.60(4.000)



S.Y.E. Sunny Young Enterprise Co., Ltd.
 S. Y. E. <http://www.sunnyyoung.com.tw>
 13F., No. 116, Sec. 1, Xintai 5th Rd., Xizhi Dist., New Taipei City 221, Taiwan
 Tel: +886 2 2696 1668(REP) Fax: +886 2 2696 2668

M170	NAME	DATE	SCALE: 2:1	REV NO	DATE	DESCRIPTION	BY	CHECKED	TOLERANCE UNLESS NOTED	
DRAWN	DEAN	2019.02.12	UNIT: mm(in.)	A					LINEAR±	.0 ±0.30(.012)
CHECKED	EASON	2019.02.12	CAD NO	B						.00 ±0.20(.008)
APPROVED	APPLE	2019.02.12	R3312-xxGS	C						.000±0.10(.004)

PART NO	R3312-xxGS	2		3		4		PROJECTION:	
---------	------------	---	--	---	--	---	--	-------------	--

2.54mm(.100") ROUND PIN SIP SOCKET

MATERIAL

Insulator: Glass filled thermoplastic polyester UL 94V-0
 Color: Black
 Pin(outer sleeve): Brass
 Plating(Pin): Tin plated 5um/200u" over
 Ni plated 2um/80u"
 Clip(cotact 4 finger): Phosphor bronze heat treated
 Plating(Clip): Gold plated over
 Ni plated 2um/80u"

SPECIFICATIONS

Temperature range: Gold plated: -55°C ~ +125°C
 Tin plated: -40°C ~ +105°C
 Current rating: 3.0A
 Voltage rating: 60V AC/DC
 Insulation resistance: 1000 MΩ Min. at 100V
 Contact resistance: 0.04 Ω Max.

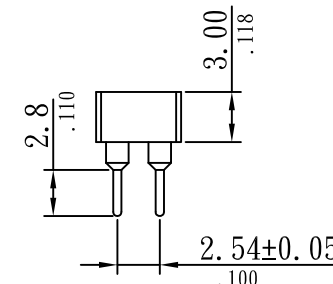
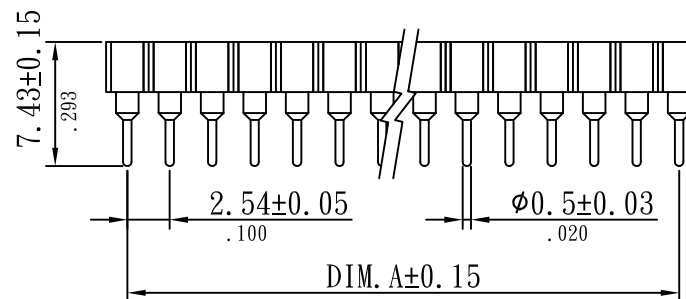
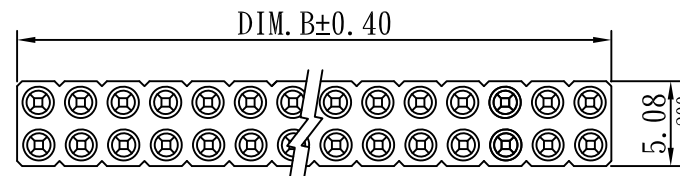
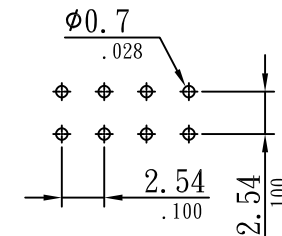
Order Information

R 3312-xx H S-D
 1 2 3 4 5 6

1. RoHS
2. Series
3. Pin No.
4. Selective gold plated
5. Straight angle
6. Dual row

Dimensional Information

Circuits	DIM. A		DIM. B		Circuits	DIM. A		DIM. B		Circuits	DIM. A		DIM. B	
	mm	in	mm	in		mm	in	mm	in		mm	in	mm	in
4	2.54	0.100	5.08	0.200	30	35.56	1.400	38.10	1.500	56	68.58	2.700	71.12	2.800
6	5.08	0.200	7.62	0.300	32	38.10	1.500	40.64	1.600	58	71.12	2.800	73.66	2.900
8	7.62	0.300	10.16	0.400	34	40.64	1.600	43.18	1.700	60	73.66	2.900	76.20	3.000
10	10.16	0.400	12.70	0.500	36	43.18	1.700	45.72	1.800	62	76.20	3.000	78.74	3.100
12	12.70	0.500	15.24	0.600	38	45.72	1.800	48.26	1.900	64	78.74	3.100	81.28	3.200
14	15.24	0.600	17.78	0.700	40	48.26	1.900	50.80	2.000	66	81.28	3.200	83.82	3.300
16	17.78	0.700	20.32	0.800	42	50.80	2.000	53.34	2.100	68	83.82	3.300	86.36	3.400
18	20.32	0.800	22.86	0.900	44	53.34	2.100	55.88	2.200	70	86.36	3.400	88.90	3.500
20	22.86	0.900	25.40	1.000	46	55.88	2.200	58.42	2.300	72	88.90	3.500	91.44	3.600
22	25.40	1.000	27.94	1.100	48	58.42	2.300	60.96	2.400	74	91.44	3.600	93.98	3.700
24	27.94	1.100	30.48	1.200	50	60.96	2.400	63.50	2.500	76	93.98	3.700	96.52	3.800
26	30.48	1.200	33.02	1.300	52	63.50	2.500	66.04	2.600	78	96.52	3.800	99.06	3.900
28	33.02	1.300	35.56	1.400	54	66.04	2.600	68.58	2.700	80	99.06	3.900	101.60	4.000



Sunny Young Enterprise Co., Ltd.
 S. Y. E. <http://www.sunnyyoung.com.tw>
 13F., No. 116, Sec. 1, Xintai 5th Rd., Xizhi Dist., New Taipei City 221, Taiwan
 Tel: +886 2 2696 1668(REP) Fax: +886 2 2696 2668

M170	NAME	DATE	SCALE: NTS	REV NO	DATE	DESCRIPTION	BY	CHECKED	TOLERANCE UNLESS NOTED	
DRAWN	RALF	2020.07.09	UNIT: mm(in.)	A					LINEAR±	.0 ±0.20(.008)
CHECKED	DEAN	2020.07.09	CAD NO	B						.00 ±0.15(.006)
APPROVED	JUDY	2020.07.09	R3312-xxHS-D	C						.000±0.10(.004)

PART NO R3312-xxHS-D

PROJECTION: