

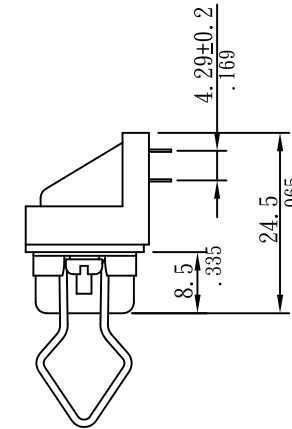
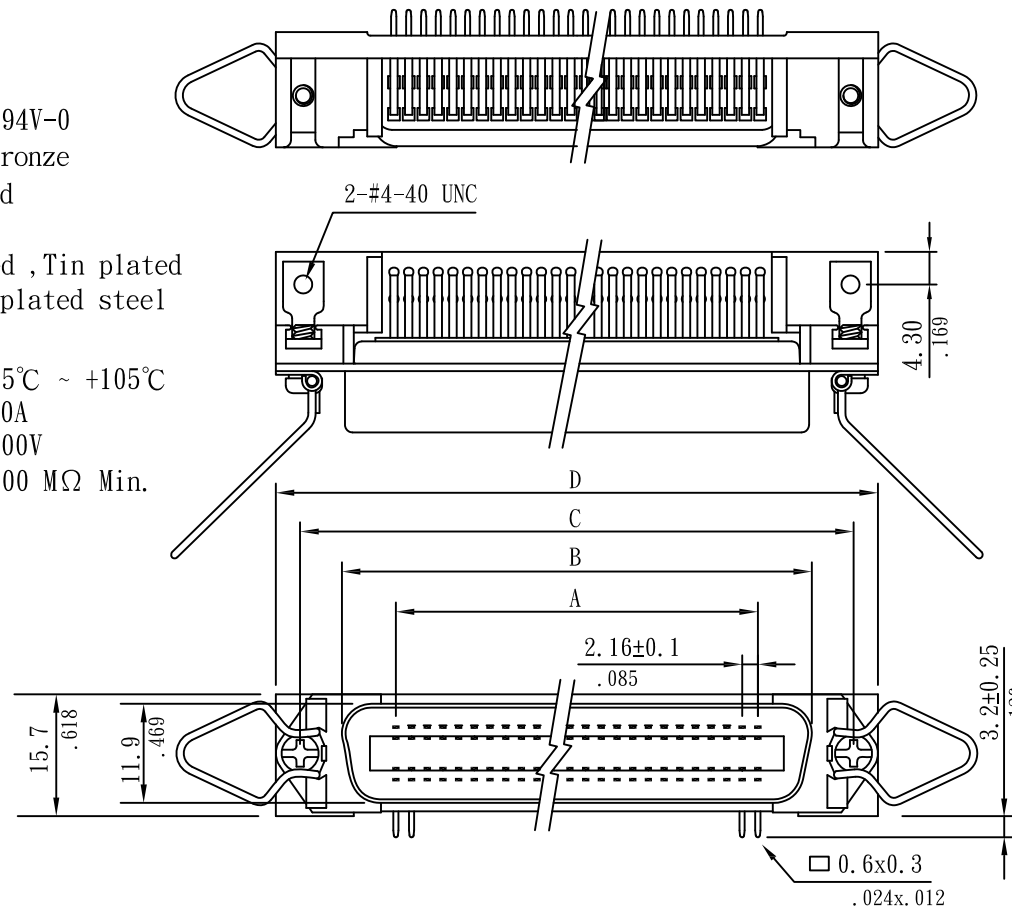
CENTRONIC P. C. B. TYPE FEMALE 90° DIP

MATERIAL

Insulator: PBT+GF UL 94V-0
 Contact: Phosphor bronze
 Contacts Plating: Gold plated
 Shell: Steel
 Shell Plating: Zinc plated, Tin plated
 or Nickel plated steel

SPECIFICATIONS

Temperature range: -55°C ~ +105°C
 Current rating: 1.0A
 Dielectric voltage: 1000V
 Insulation resistance: 1000 MΩ Min.

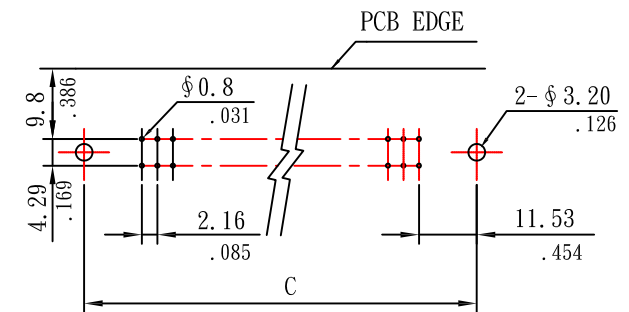


R 7100-xx F R x
 1 2 3 4 5 6

1. RoHS
2. Series No.
3. PIN No.
4. Female
5. Right angle
6. Color:G=Blue

Dimensional Information

Circuits	Dim. A	Dim. B	Dim. C	Dim. D
14	12.96(0.510)	25.20(0.992)	36.00(1.417)	43.90(1.728)
24	23.76(0.935)	36.00(1.417)	46.80(1.843)	54.70(2.154)
36	36.72(1.446)	48.90(1.925)	59.70(2.350)	67.70(2.665)
50	51.84(2.041)	64.10(2.524)	74.90(2.949)	82.80(3.260)



PCB LAYOUT
 TPLERANCE±0.05

Sunny Young Enterprise Co., Ltd.
 S. Y. E. <http://www.sunnyyoung.com.tw>
 13F., No. 116, Sec. 1, Xintai 5th Rd., Xizhi Dist., New Taipei City 221, Taiwan
 Tel: +886 2 2696 1668(REP) Fax: +886 2 2696 2668

M069	NAME	DATE	SCALE: 1:1	REV NO	DATE	DESCRIPTION	BY	CHECKED	TOLERANCE UNLESS NOTED	
DRAWN	SEAN	2017.04.27	UNIT: mm(in.)	A					LINEAR±	.0 ±0.25(.010)
CHECKED	DEAN	2017.04.27	CAD NO	B						.00 ±0.15(.006)
APPROVED	ALBERT	2017.04.27	R7100-xxFRx	C						.000±0.05(.002)
									PROJECTION:	

PART NO R7100-xxFRx

CENTRONIC P. C. B. TYPE 90° FEMALE

MATERIAL

Insulator: PBT+30% Glass-fiber UL 94V-0
 Contact: Phosphor bronze
 Contacts Plating: 1. Gold flash
 2. Seffective gold plated
 Shell: Steel
 Shell Plating: Nickel plated

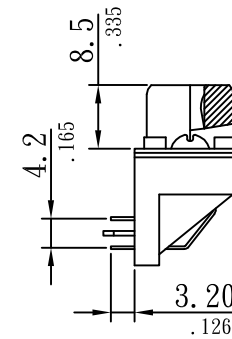
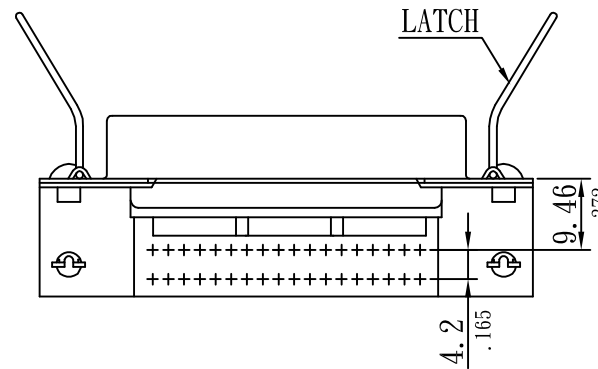
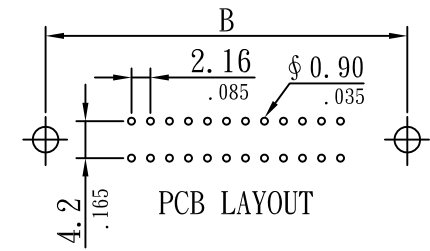
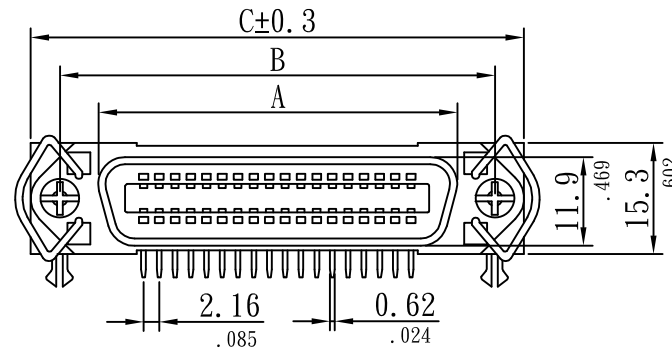
SPECIFICATIONS

Temperature range: -55°C ~ +105°C
 Current rating: 5.0A
 Dielectric voltage: 1000V
 Insulation resistance: 1000 MΩ Min.

Order Information

R 7100-xx F R x-Z
 1 2 3 4 5 6 7

1. RoHS
2. Series No.
3. PIN No.
4. Female
5. Right angle
6. A=Black G=Blue
7. Z Sheet



Dimensional Information

Circuits	Dim. A	Dim. B	Dim. C
14	25.20(0.992)	36.00(1.417)	43.90(1.728)
24	36.00(1.417)	46.80(1.843)	54.70(2.154)
36	48.90(1.925)	59.70(2.350)	67.70(2.665)
50	64.10(2.524)	74.90(2.949)	82.80(3.260)



Sunny Young Enterprise Co., Ltd.

S. Y. E. <http://www.sunnyyoung.com.tw>

13F., No. 116, Sec. 1, Xintai 5th Rd., Xizhi Dist., New Taipei City 221, Taiwan

Tel:+886 2 2696 1668(REP) Fax:+886 2 2696 2668

PART NO

R7100-xxFRx-Z

M001	NAME	DATE	SCALE: NTS	REV NO	DATE	DESCRIPTION	BY	CHECKED	TOLERANCE UNLESS NOTED	
DRAWN	YXF	2009.09.11	UNIT: mm(in.)	A					LINEAR±	.0 ±0.30(.012)
CHECKED	PIQI	2009.09.11	CAD NO	B				.00 ±0.20(.008)		
APPROVED	MARS	2009.09.11	R7100-xxFRx-Z	C				.000±0.10(.004)		
									PROJECTION:	

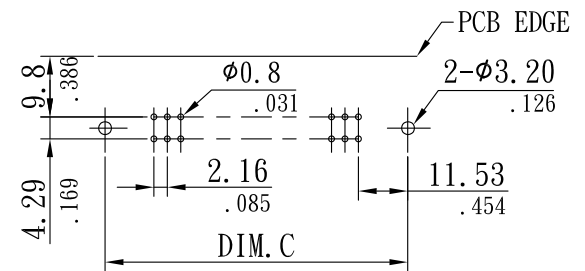
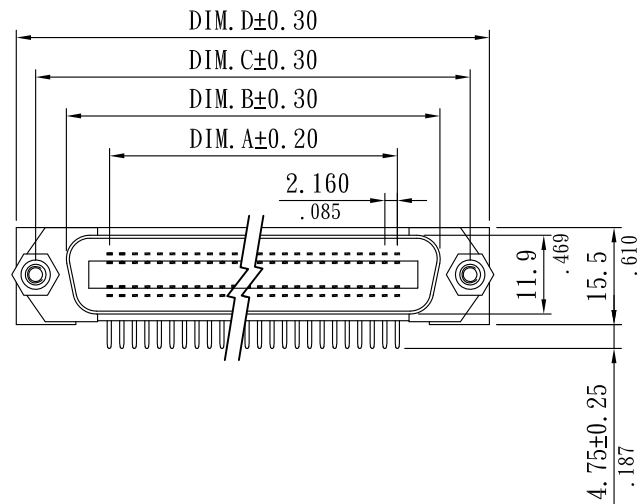
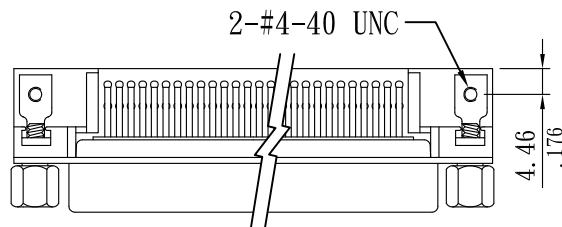
2.16mm(.085") CENTRONIC FEMALE PCB 90° TYPE

MATERIAL

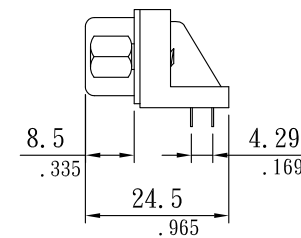
Insulator: PBT+GF UL 94V-0
 Color: Blue
 Contact: Phosphor bronze
 Contact plating: Gold plated
 Shell: Steel
 Shell plating: Nickel, tin or zinc plated
 Screw: Copper alloy
 Screw plating: Nickel plated

SPECIFICATIONS

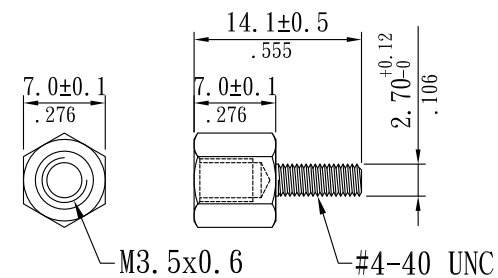
Temperature range: -55°C ~ +105°C
 Current rating: 1.0A
 Dielectric withstand voltage: 1000V AC
 Insulation resistance: 1000 MΩ Min.



PCB LAYOUT



HEX SCREW



Order Information

R 7100-xx F R G-L
 1 2 3 4 5 6 7

1. RoHS
2. Series
3. Pin No.
4. Female
5. Right angle
6. Blue
7. L shape

Dimensional Information

Circuits	DIM. A		DIM. B		DIM. C		DIM. D	
	mm	in	mm	in	mm	in	mm	in
14	12.96	0.510	25.20	0.992	36.00	1.417	43.90	1.728
24	23.76	0.935	36.00	1.417	46.80	1.843	54.70	2.154
36	36.72	1.446	48.90	1.925	59.70	2.350	67.70	2.665
50	51.84	2.041	64.10	2.524	74.90	2.949	82.80	3.260

Sunny Young Enterprise Co., Ltd.
 S. Y. E. <http://www.sunnyyoung.com.tw>
 13F., No. 116, Sec. 1, Xintai 5th Rd., Xizhi Dist., New Taipei City 221, Taiwan
 Tel: +886 2 2696 1668(REP) Fax: +886 2 2696 2668

M069	NAME	DATE	SCALE: NTS	REV NO	DATE	DESCRIPTION	BY	CHECKED	TOLERANCE UNLESS NOTED	
DRAWN	RALF	2019.05.24	UNIT: mm(in.)	A					LINEAR±	.0 ±0.30(.012)
CHECKED	EASON	2019.05.24	CAD NO	B						.00 ±0.20(.008)
APPROVED	APPLE	2019.05.24	R7100-xxFRG-L	C						.000±0.10(.004)
PART NO R7100-xxFRG-L									PROJECTION:	

CENTRONIC FEMALE 180° PCB TYPE

MATERIAL

Insulator: PBT+GF UL 94V-0
 Contact: Phosphor Bronze or Brass Gold plated
 Contact area: Gold plated
 Shell: Steel
 Plating: Cu plated over steel 120u"
 Nickel plated over Cu 50u"

SPECIFICATIONS

Temperature range: -55°C ~ +105°C
 Current rating: 5.0A
 Dielectric voltage: 1000V
 Insulation resistance: 1000 MΩ min.

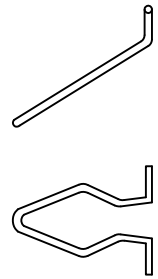
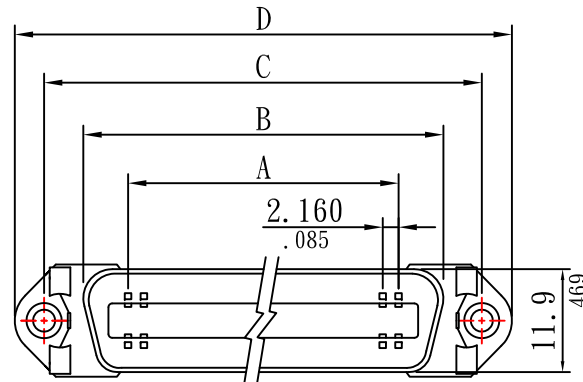
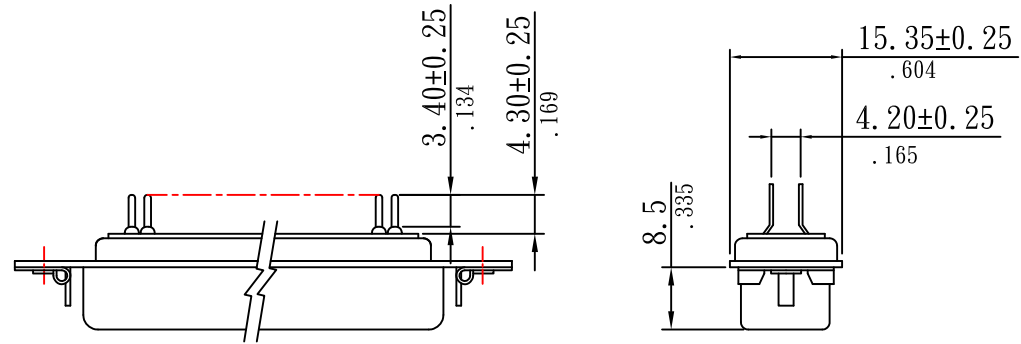
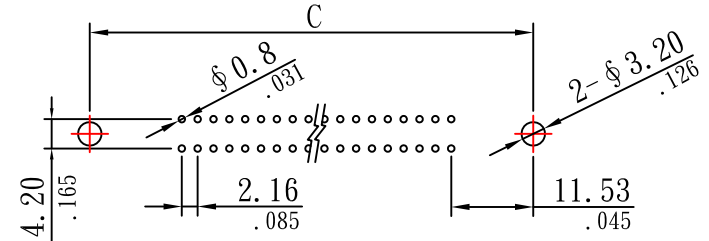
Order Information

R 7100-xx F S x
 1 2 3 4 5 6

1. RoHS
2. Series
3. PIN No.
4. Female
5. Straight
6. Color:A:Black G:Blue

Dimensional Information

Circuits	Dim. A	Dim. B	Dim. C	Dim. D
14	12.96(0.510)	25.20(0.992)	36.00(1.417)	44.10(1.736)
24	23.76(0.935)	36.00(1.417)	46.80(1.843)	54.90(2.161)
36	36.72(1.446)	48.90(1.925)	59.70(2.350)	67.90(2.673)
50	51.84(2.041)	64.10(2.524)	74.90(2.949)	83.00(3.268)



Sunny Young Enterprise Co., Ltd. S. Y. E. http://www.sunnyyoung.com.tw 13F., No. 116, Sec. 1, Xintai 5th Rd., Xizhi Dist., New Taipei City 221, Taiwan Tel: +886 2 2696 1668(REP) Fax: +886 2 2696 2668	M069	NAME	DATE	SCALE: 1:2	REV NO	DATE	DESCRIPTION	BY	CHECKED	TOLERANCE UNLESS NOTED		
	DRAWN	ZOEY	2017.07.13	UNIT: mm(in.)	A						LINEAR ±	.0 ±0.30(.012)
	CHECKED	SEAN	2017.07.13	CAD NO	B							.00 ±0.20(.008)
PART NO	R7100-xxFSx	APPROVED	ALBERT	2017.07.13	R7100-xxFSx	C						.000 ±0.10(.004)
											PROJECTION:	

CENTRONIC P. C. B. STRAIGHT

MATERIAL

Insulator: P.B.T+30% Glass fiber UL 94V-0
 Contact: Phosphor Bronze
 Shell finish: Steel nickel plated
 Hood: Steel
 Plating: Contact:
 Selective gold over nickel plated(Contact area)
 Tin over nickel plated(Tail area)
 Shell:
 Nickel over copper plated
 Hood:
 Nickel over copper plated

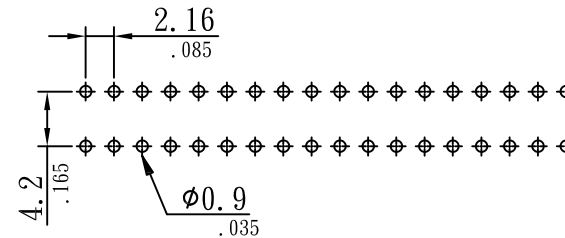
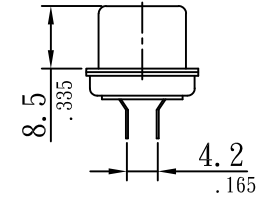
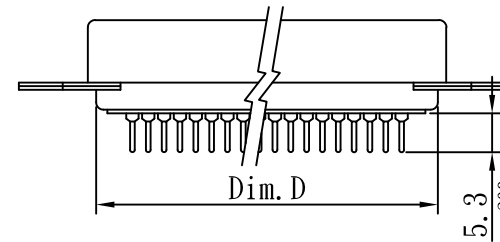
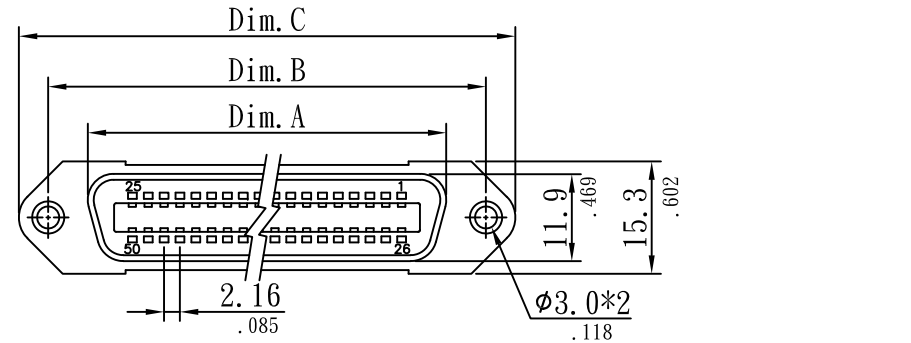
SPECIFICATIONS

Temperature range: -55°C ~ +105°C
 Current rating: 1.0A
 Dielectric voltage: 1000V
 Insulation resistance: 1000 MΩ Min.
 Contact resistance: 0.025Ω Max.

Order Information

R 7100-xx F S G-N
 1 2 3 4 5 6 7

1. RoHS
2. Series
3. PIN No.
4. Female
5. Straight
6. G:Blue
7. Without spring



RECOMMENDED P. C. B LAYOUT (TOP VIEW)
 TOLERANCES: ±0.10mm

Circuits	Dim. A		Dim. B		Dim. C		Dim. D	
	mm	in	mm	in	mm	in	mm	in
14	25.20	0.992	36.00	1.417	43.90	1.728	22.70	0.894
24	36.00	1.417	46.80	1.843	54.70	2.154	33.50	1.319
36	48.90	1.925	59.70	2.350	67.70	2.665	46.60	1.835
50	64.10	2.524	74.90	2.949	82.80	3.260	61.70	2.429



Sunny Young Enterprise Co., Ltd. S. Y. E. http://www.sunnyyoung.com.tw 13F., No. 116, Sec. 1, Xintai 5th Rd., Xizhi Dist., New Taipei City 221, Taiwan Tel: +886 2 2696 1668(REP) Fax: +886 2 2696 2668	L026	NAME	DATE	SCALE: NTS	REV NO	DATE	DESCRIPTION	BY	CHECKED	TOLERANCE UNLESS NOTED	
	DRAWN	RALF	2019.10.08	UNIT: mm(in.)	A					LINEAR± .0 ±0.30(.012) .00 ±0.20(.008)	
	CHECKED	DEAN	2019.10.08	CAD NO	B						
PART NO	R7100-xxFSG-N	APPROVED	APPLE	2019.10.08	R7100-xxFSG-N	C					PROJECTION:

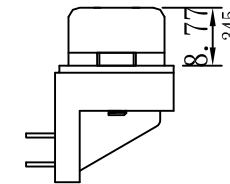
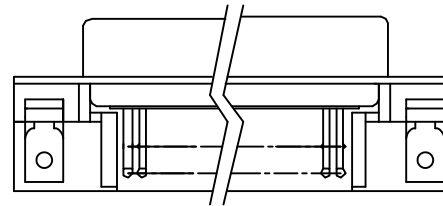
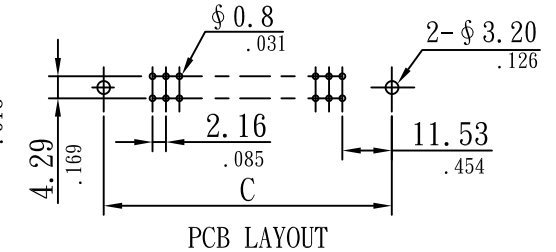
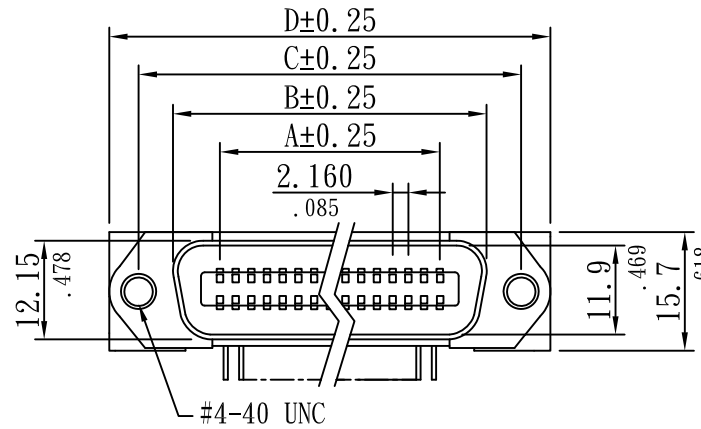
CENTRONIC P. C. B. TYPE 90° MALE

MATERIAL

Insulator: PBT+ Glass-fiber UL 94-V0
 Contact: Phosphor bronze
 Contacts Plating: Gold plated
 Shell: Steel
 Shell Plating: Nickel plated steel

SPECIFICATIONS

Temperature range: -55°C ~ +105°C
 Current rating: 5.0A
 Dielectric voltage: 1000V
 Insulation resistance: 1000 MΩ Min.



Order Information

R 7100-xx M R x
 1 2 3 4 5 6

1. RoHS
2. Series No.
3. PIN No.
4. Male
5. Right angle
6. A=Black G=Blue

Dimensional Information

Circuits	Dim. A	Dim. B	Dim. C	Dim. D
14	12.96(0.510)	25.60(1.008)	36.00(1.417)	43.90(1.728)
24	23.76(0.935)	36.30(1.429)	46.80(1.843)	54.70(2.154)
36	36.72(1.446)	49.30(1.941)	59.70(2.350)	67.70(2.665)
50	51.84(2.041)	64.40(2.535)	74.90(2.949)	82.80(3.260)



Sunny Young Enterprise Co., Ltd.

S. Y. E. <http://www.sunnyyoung.com.tw>

13F., No. 116, Sec. 1, Xintai 5th Rd., Xizhi Dist., New Taipei City 221, Taiwan

Tel: +886 2 2696 1668(REP) Fax: +886 2 2696 2668

M069	NAME	DATE	SCALE: NTS	REV NO	DATE	DESCRIPTION	BY	CHECKED	TOLERANCE UNLESS NOTED	
DRAWN	YXF	2009.04.21	UNIT: mm(in.)	A					LINEAR±	.0 ±0.30(.012)
CHECKED	PIQI	2009.04.21	CAD NO	B				.00 ±0.20(.008)		
APPROVED	PC	2009.04.21	R7100-xxMRx	C				.000±0.10(.004)		
PART NO	R7100-xxMRx								PROJECTION:	

CENTRONIC P. C. B. TYPE MALE

MATERIAL

Insulator: P. B. T. +30%Glass Fiber UL94V-0
 Contact: Phosphor Bronze
 Plating: Selective Gold Over Nickel Plated on Contact Area
 Tin Over Nickel Plated on Tail Area

SPECIFICATIONS

Temperature range: -55°C ~ +105°C
 Current rating: 5.0A
 Dielectric withstand voltage: 1000V AC
 Insulation resistance: 1000 MΩ min.
 Contact resistance: 0.025Ω max.

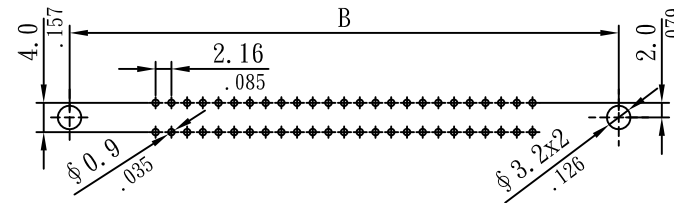
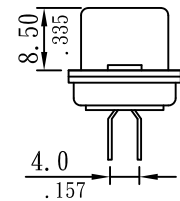
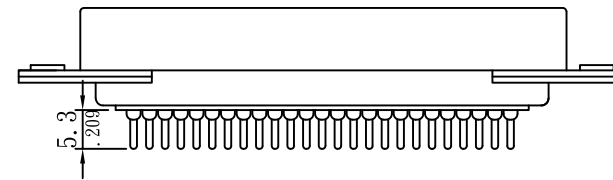
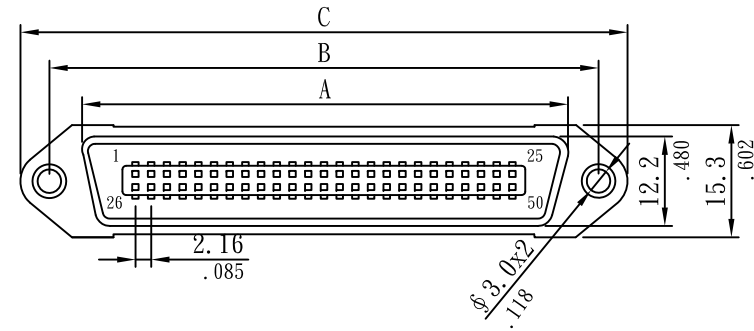
Order Information

R 7100-xx M S x
 I 2 3 4 5 6

1. RoHS.
2. Series No.
3. Contact number: See Dim. Information.
4. Male.
5. Straight.
6. Insulator color: A=BLACK, G=BLUE.

Dimensional Information

Circuits	Dim. A	Dim. B	Dim. C
14	25.50(1.004)	36.00(1.417)	43.90(1.728)
24	36.30(1.429)	46.80(1.843)	54.70(2.154)
36	49.30(1.941)	59.70(2.350)	67.70(2.665)
50	64.40(2.535)	74.90(2.949)	82.80(3.260)



RECOMMENDED P. C. B LAYOUT(TOP VIEW)
 TOLERANCES: ±0.10mm.

S.Y.E. Sunny Young Enterprise Co., Ltd.
 S. Y. E. <http://www.sunnyyoung.com.tw>
 13F., No. 116, Sec. 1, Xintai 5th Rd., Xizhi Dist., New Taipei City 221, Taiwan
 Tel: +886 2 2696 1668(REP) Fax: +886 2 2696 2668

M001	NAME	DATE	SCALE: NTS	REV NO	DATE	DESCRIPTION	BY	CHECKED	TOLERANCE UNLESS NOTED		
DRAWN	LEI JUN	2007. 10. 15	UNIT: mm(in.)	A					LINEAR±	.0 ±0.30(.012)	
CHECKED	SOFE	2007. 10. 15	CAD NO	B				.00 ±0.20(.008)			
APPROVED	LISA	2007. 10. 15	R7100-xxMSx	C				.000±0.10(.004)			
PART NO										R7100-xxMSx	PROJECTION: